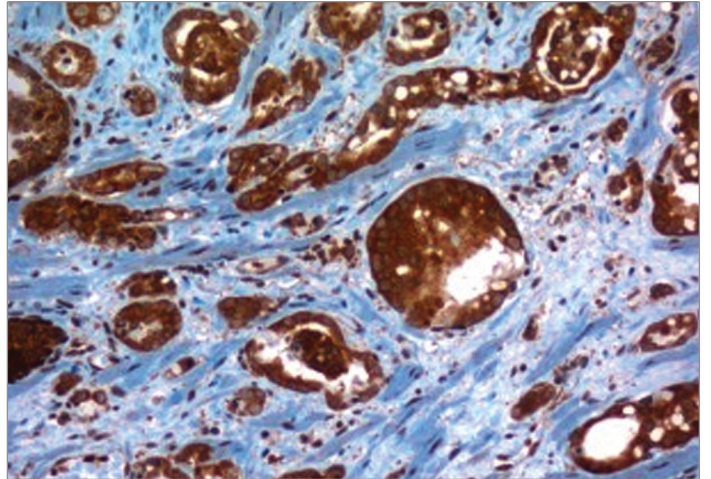


## Blocking donor T-cell mediated TNF $\alpha$ signalling can enhance positive effects of stem cell transplantation

Canadian and Swiss collaborators have identified a way to potentially make stem cell transplants more feasible for patients with blood cancer and other auto-immune diseases and improve outcomes after a transplant.

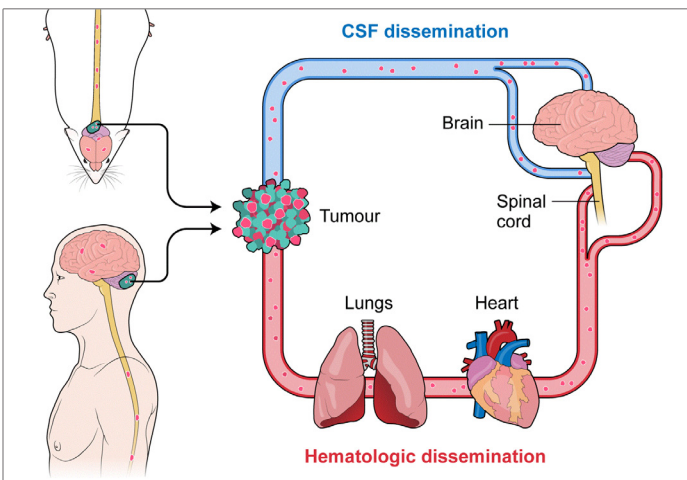
[READ MORE >](#)



## Breakthrough test uses ctDNA to determine treatment resistance in advanced prostate cancer patients

A new test that distinguishes who will respond well to standard therapies and who will become resistant to treatment is the first of its kind to offer hope to patients with metastatic castration-resistant prostate cancer, say researchers involved in the ctDNA study.

[READ MORE >](#)



## Medulloblastoma leptomeningeal metastases can also occur through the bloodstream, study finds

Findings from a recent study published in *Cell* are breaking new ground in the pediatric brain cancer world, suggesting medulloblastoma cells can metastasize in an entirely different way than previously assumed.

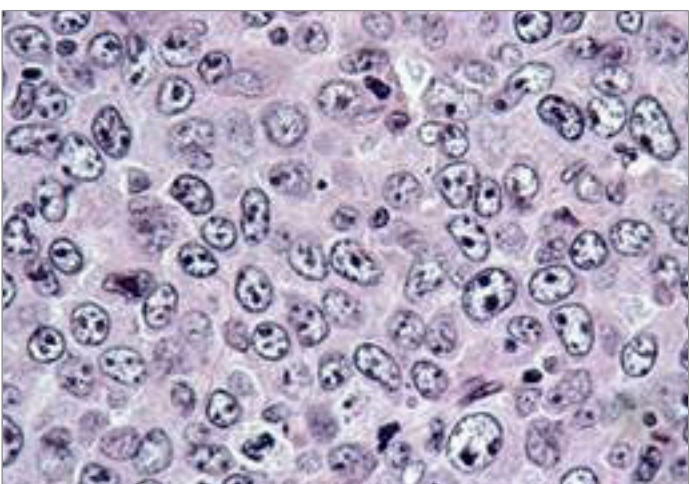
[READ MORE >](#)



## Targeting hypoxia can, in turn, target cancer-initiating cells in colorectal tumours

This study found that colorectal cancer cells enter a hypoxic, cancer-initiating cell state with a four-day course of 5-FU and were extremely sensitive to the prodrug Evo. The team also found a non-invasive biomarker for hypoxia.

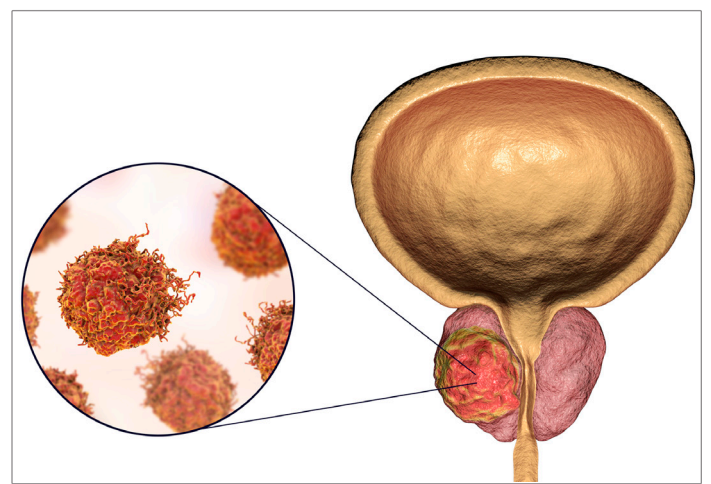
[READ MORE >](#)



## Researchers create targeted sequencing pipeline for precision medicine in lymphoid cancers

A TFRI-funded team led from Vancouver has established that hybrid-capture sequencing is the method of choice for the sequencing of actionable gene mutations in two types of lymphoma and in chronic lymphocytic leukemia.

[READ MORE >](#)



## Tumour hypoxia team sheds light on the role of mTOR signalling in prostate cancer development

Two key findings are highlighted in another study published by TFRI's hypoxia team which help to understand the role of the mTOR signalling pathway in the development and aggressiveness of prostate cancer.

[READ MORE >](#)

## Other TFRI News

[Pancreatic project \(EPPIC\) launched in March; garners national, international interest >](#)

[2019 Program Project Grants RFA now posted >](#)

[2019 New Investigators RFA available online >](#)

*Links* is compiled and circulated quarterly by TFRI to highlight recently published research by our funded investigators. It is produced by TFRI HQ in Vancouver, BC. TFRI is either the principal or supporting funder of the research presented here. We hope you enjoyed reading this issue. Please send any questions or feedback to: [links@tfri.ca](mailto:links@tfri.ca)

Previous issues are available online in our [E-Newsletter Archive](#).

Visit [www.tfri.ca](http://www.tfri.ca) to learn more about our research investment portfolio

TFRI is either the principal or supporting funder of the research presented here. Funded investigators are invited to submit their publications to us for consideration in an upcoming issue.