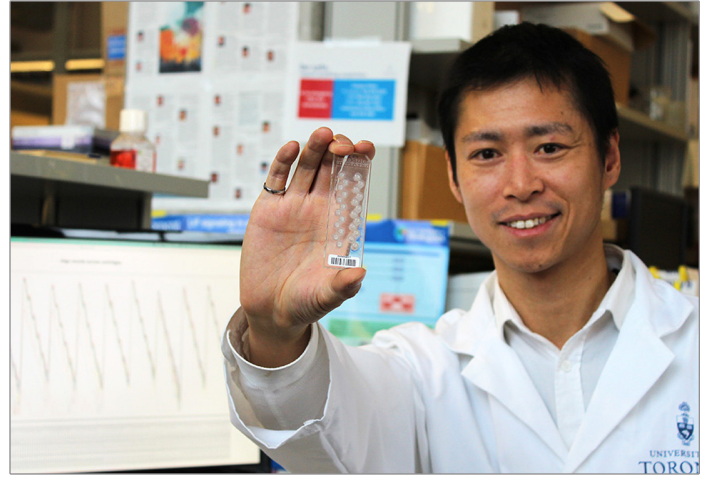


## Groundbreaking study sheds light on signaling molecules that control blood stem cells

TFRI's long-funded program project on human leukemia has made groundbreaking progress in the quest to expand human blood stem cells for therapeutic purposes.

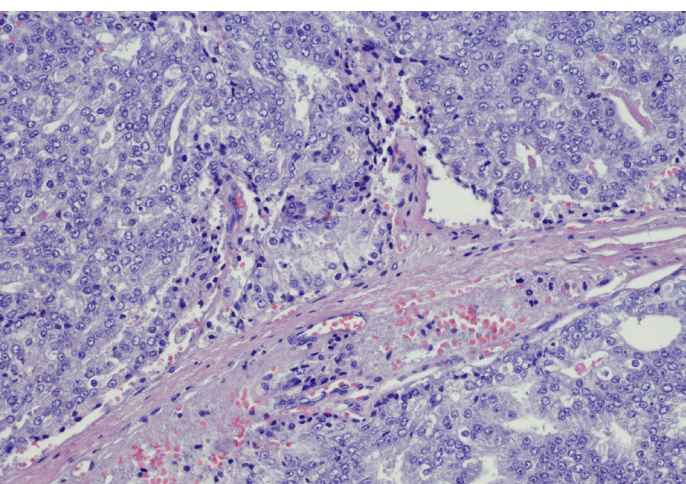
[READ MORE >](#)



## Novel 17-gene test predicts if patients with aggressive leukemia will respond to treatment or not

What if there was a way to predict if leukemia patients would respond to standard treatment or not?

[READ MORE >](#)



## Canadian study identifies predictive genomic signature for high-risk prostate cancer

New data from a top Canadian research team has the potential to change the way aggressive prostate tumours are treated and, importantly, improve cure rates.

[READ MORE >](#)



## Complement inhibitors decrease neutralization of some oncolytic viruses, increase treatment efficacy

The use of oncolytic viruses to stimulate a patient's immune system as well as directly kill tumour cells is a novel approach to eradicating cancer, but antibodies are often generated that counter treatment efficacy.

[READ MORE >](#)

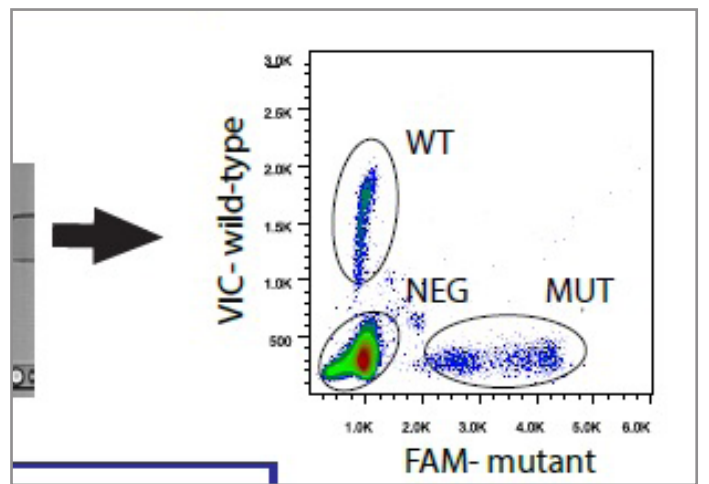


DR. MARIANNE KORITZINSKY

## MATE2 expression a negative predictive biomarker to metformin's efficacy in cancer treatment

A recent study by TFRI's hypoxia group sheds new light on biomarkers that may indicate the drug metformin's efficacy in patients.

[READ MORE >](#)



## B.C. team detects rare ovarian cancer mutation in patient ctDNA

A team examining the circulating tumour DNA (ctDNA) of women with a rare ovarian cancer has detected the mutation which is the defining feature of adult granulosa cell tumours (AGCTs).

[READ MORE >](#)

## Other TFRI News

[TFRI, Princess Margaret and BC Cancer Agency launch pilot project to accelerate precision medicine >](#)

[TFRI announces \\$5-million pan-Canadian multiple myeloma project led by New Brunswick clinician >](#)

[TFRI turns 10! We'll celebrate at our 8th ASM: Details and deadlines >](#)

Links is compiled and circulated quarterly by TFRI to highlight recently published research by our funded investigators. It is produced by TFRI HQ in Vancouver, BC. TFRI is either the principal or supporting funder of the research presented here. We hope you enjoyed reading this issue. Please send any questions or feedback to: [links@tfri.ca](mailto:links@tfri.ca)

Previous issues are available online in our [E-Newsletter Archive](#).

Visit [www.tfri.ca](http://www.tfri.ca) to learn more about our research investment portfolio

