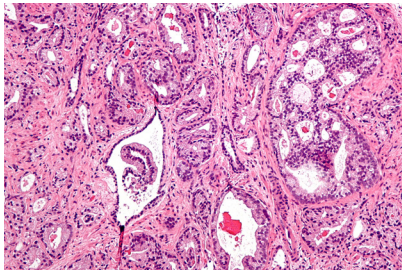




RESEARCH HIGHLIGHTS



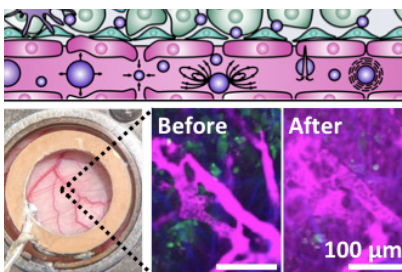
Quantifying PTEN loss could help stratify risk of relapse for patients with prostate cancer

A research team in Kingston, Ontario has identified the specific threshold at which PTEN loss becomes clinically significant, presenting a new tool that could help guide what kind of treatment a patient receives after a prostatectomy.



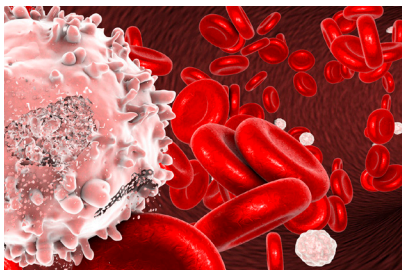
Alberta-based brain research team publishes papers in two high-impact journals

Members of a translational research project supported by TFRI from 2012 to 2019 continue to make an impact with two recent publications in important medical research journals.



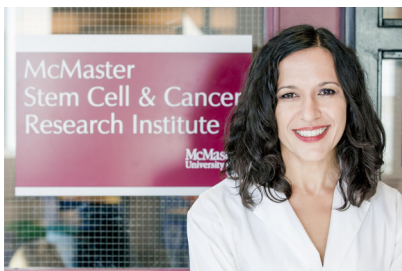
New method allows nanobubbles to exit vascular system, improving ultrasound-based therapies

Researchers have devised a method to get nanobubbles out of the vascular system intact, presenting a means by which to access and treat deep-seated tumours with ultrasound therapies.



TMEM30A loss associated with improved survival in Diffuse Large B-cell Lymphoma

BC-based researchers have found that TMEM30A loss affects the cell membrane, allowing drugs to be delivered into cancer cells more effectively and improving their efficacy.



New immunotherapy shows promise in treating aggressive adult brain cancer

A new CAR T-cell therapy developed by researchers in Hamilton and Toronto may help treat glioblastoma (GBM), an aggressive form of brain cancer that affects adults.

TFRI NEWS

Dr. Anthony Reiman named head of TFRI's Atlantic Node

Update on the Marathon of Hope Cancer Centres Network

A blood test could predict who benefits from immunotherapy

2020 Virtual Terry Fox Run: Important info for researchers

Links is compiled and circulated quarterly by TFRI to highlight recently published research by our funded investigators. It is produced by TFRI HQ in Vancouver, BC. TFRI is either the principal or supporting funder of the research presented here. We hope you enjoyed reading this issue. Please send any questions or feedback to: links@tfri.ca

Previous issues are available online in our [E-Newsletter Archive](#).

Visit www.tfri.ca to learn more about our research investment portfolio

TFRI is either the principal or supporting funder of the research presented here. Funded investigators are invited to submit their publications to us for consideration in an upcoming issue.

