



## RESEARCH HIGHLIGHTS



### New study finds Li-Fraumeni syndrome defined by more than one gene

Graduate researcher Valli Subasri, first author of a recent paper published by TFRI researchers at The Hospital for Sick Children in Toronto, explains how an expansion in genetic and epigenetic testing will enable better diagnosis of Li-Fraumeni syndrome.



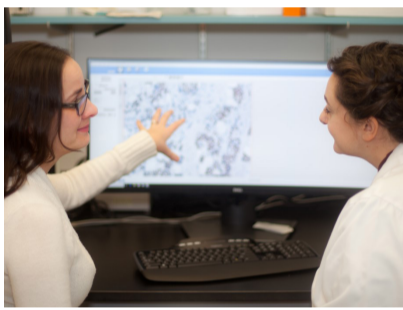
### New Brunswick-based Dr. Tony Reiman shares progress of pan-Canadian multiple myeloma study

A pan-Canadian, TFRI-funded team led by Atlantic clinician Dr. Tony Reiman has assembled a cohort of 95 patients and identified signatures of T-cell exhaustion that may predict resistance to immunotherapy for patients with multiple myeloma.



### Scientists develop novel strategy to penetrate cancer cell wall

Using an unexpected compound to modify nanoparticles, Toronto-based researchers significantly improved porphyrin uptake into cancer cells by “fluidizing” the cell wall, improving the efficacy of photodynamic therapy with potential for improved drug delivery.



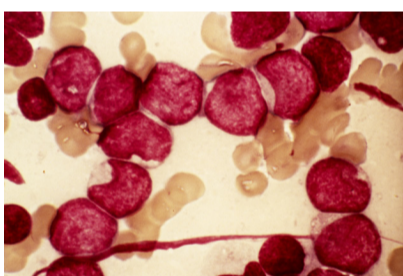
### Researchers investigate potential of natural killer cells to improve immunotherapy in ovarian cancers

We interviewed Dr. Jeanette Boudreau, a Halifax-based Terry Fox New Investigator who has identified a panel of markers that can be used to define natural killer (NK) cells clearly, in hopes of determining whether NK cells can improve the effectiveness of immunotherapies for ovarian cancer.



### Study mimicking brain development identifies protein linked to neurodevelopmental disorders

Researchers at the Princess Margaret Cancer Centre, led by Terry Fox New Investigator Dr. Phedias Diamandis, have linked a specific protein to certain rare neurodevelopmental disorders by profiling proteins as they develop in human brain tissue and in mini brains-in-a-dish.



### Investigators explore how acute myeloid leukemia therapies (AML) can be tailored to individuals

To better match AML therapies to individual patients, TFRI-funded researchers led by Dr. John Dick have developed an approach that can help predict a cancer's response to therapy in a biologically intuitive way.

## TFRI NEWS

**The Marathon of Hope Cancer Centres Network continues to grow: An update by Dr. André Veillette**

**MOHCCN Pathfinder Project clears the way for future data sharing among Network members**

**Terry Fox Run Challenge 2023: Register today and help support cancer research**

**TFRI is growing! Meet our newest team members and see who has taken on new roles**

Links is compiled and circulated quarterly by TFRI to highlight recently published research by our funded investigators. It is produced by TFRI staff. We hope you enjoyed reading this issue. Please send any questions or feedback to: [links@tfri.ca](mailto:links@tfri.ca).

Previous issues are available online in our [E-Newsletter Archive](#).

Visit [www.tfri.ca](http://www.tfri.ca) to learn more about our research investment portfolio.

TFRI is either the principal or supporting funder of the research presented here. Funded investigators are invited to submit their publications to us for consideration in an upcoming issue.

